

OVERVIEW

RANSBOND-STICK is a cold applied adhesive for fixing roofing felts and other insulating material on various surfaces. **RANSBOND-STICK** is recommended where the use of hot bitumen is either difficult or prohibited. **RANSBOND-STICK** is manufactured from select grades of bitumen, suitably blended with other raw materials, to achieve creamy appearance in semi liquid consistency.

PROPERTIES

RANSBOND-STICK is cold applied adhesive with following properties:-

- Easy to use.
- Cold Adhesion.
- Well bonding with Asphalt, and more materials.
- Applied as Bitumen Grades for pasting purpose.

AREAS OF USE

RANSBOND-STICK is ready to use and is recommended for sticking roofing felts on concrete, masonry, timber, asbestos, tiles and metal surface.

RANSBOND-STICK is ideal for sticking waterproofing felts to roofs of railway coaches and buses.

INSTRUCTIONS FOR USE

The application temperature should be between 5°C to 65°C. Application procedures may vary slightly depending upon site conditions. The general recommended guidelines for the application of the waterproofing system are as follows:

SURFACE PREPARATION

The surface shall be cleaned thoroughly of all contaminants like dust, traces of curing compound, oil and grease. All surface imperfections and protrusions shall be removed and repaired. Structurally unsound and friable concrete must be removed and repaired with a suitable **RANSCRETE AP** concrete repair mortar.

- Apply **RANSBOND-STICK** on the cleaned surface @ 1.4 kg per sqm with a spatula or brush.
- Allow approximately 10 minutes before laying felt and sticking the same with mild pressure.
- Overlaps should be suitably sealed.

HEALTH & SAFETY

Avoid prolonged contact with eyes and skin. For detailed information refer to relevant material safety data sheet.

PACKGING & STORAGE

RANSBOND-STICK is packaged in 18Kgs. Also available in customized packaging.

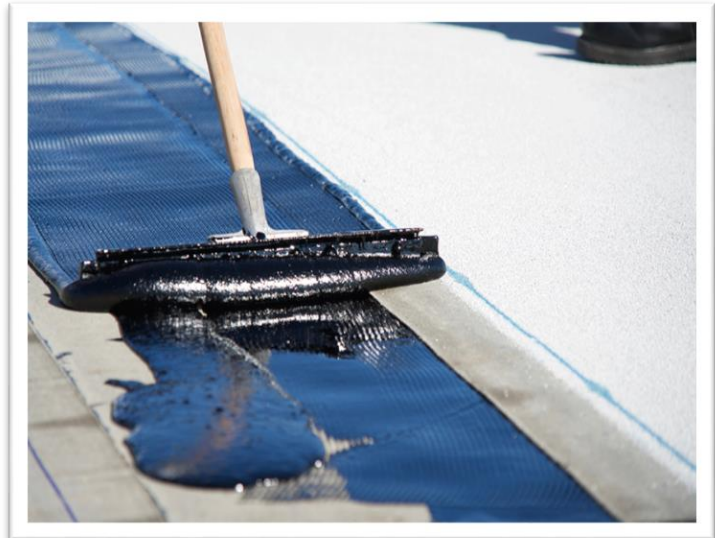
Store Material in a clean dry area protected from direct sunlight and extreme heat and cold. Unopened Rolls can be stored for 6 months. Use oldest material first.

RANS ENGINEERING & CHEMICALS offers a comprehensive range of products and services for most concrete and finishing needs. Please contact the RANS Technical Service Department or your local RANS agent for further information, samples, demonstrations and instructor services. The information given in this leaflet is based upon laboratory research, as well as extensive field work and application. All products are sold subject to standard conditions of sale which are available on request. This information is based on RANS present state of knowledge and is intended to provide general information on RANS's products and their methods of use. The prospective user is recommended to determine the suitability of RANS's suggestions and products before adopting them on a commercial scale.

**TECHNICAL
DATA**

Product	Cold Applied Bitumen Compound-Elastomeric Polymerized
Appearance	Black
CHARACTERISTICS	REQUIREMENT
Softening Point <i>Min</i> °C	70
Penetration at 25 °C 100 g sec, 1/10 mm, <i>Min</i>	80 mm
Water Content, % <i>Max</i>	0.2
Drying Time	Surface Dry, <i>Max</i> 3 Hrs. Hard Dry, <i>Max</i> 6 Hrs.
Flash Point °C <i>Min</i>	40
Packaging	18 Kgs. Can be made available in custom requirements of client as per request.
Storage	6 months in original unopened condition.

PICTURES/IMAGES AT GLANCE



RANS ENGINEERING & CHEMICALS PVT. LTD

[An ISO 9001: 2015 Company]

205, GALI NO-7, A BLOCK, BRIJPURI
YAMUNA VIHAR, NEW DELHI-110094

CONTACT AT: +91-11-22170895, +91-9871393743

Website: www.ransengineering.com

Email: ransengineering@gmail.com