

## OVERVIEW

RANCONMIX-IWC is an integral waterproofing admixture for concrete / mortar which chemically converts the water-soluble compounds present in concrete / mortar into stable water insoluble compounds. It has good plasticizing properties, makes concrete cohesive and prevents segregation. It is used for all types of concrete / mortar requiring water impermeability.

## PROPERTIES

RANCONMIX-IWC is a ready to use aqueous solution of highly purified Lignosulphonate and a catalyst which promotes a more rapid and complete hydration of cement. This action helps in making the Concrete/ mortar more dense thereby reducing porosity and generating waterproofing properties.

- Makes concrete impermeable, thereby resisting frost and preventing efflorescence.
- Improves plasticity of concrete and mortar, hence easy processing and preventing segregation.
- Saves up to 10 % - 15 % water, increases the strength of the surface.
- Easily soluble in water with a homogenous mix.
- Highly plasticized concrete/ mortar.
- Economical, easy to use.
- Reduces permeability and porosity.
- Concrete containing RANCONMIX-IWC is resistant to water.
- Penetration either under conditions of hydrostatic pressure.
- Capillary absorption.

## AREAS OF USE/PRIMARY USE

It is used in ready mix plants, blocks, concrete and all sorts of mortar where less porosity is of utmost importance. It produces a plastic concrete that is more workable, easier to place and more finish able.

## INSTRUCTIONS FOR USE

The application temperature should be between 5°C to 45°C. Application procedures may vary slightly depending upon site conditions. The general recommended guidelines for the application of the waterproofing system are as follows:

### DIRECTION FOR USE:-

RANCONMIX-IWC should be added to the concrete mix/ cement mortar during the mixing cycle at the same time as the water and the aggregates. Never add RANCONMIX-IWC to the dry cement.

- Mix 150 ml. to 300 ml. Per 50 kgs. Bag of cement.
- Optimum dosage is 200 ml per bag of cement.
- Mix RANCONMIX-IWC directly into the gauging water.
- Where mixing with gauging water is not possible it should be poured on aggregate in the feeder.
- DO NOT ADD RANCONMIX-IWC DIRECTLY TO THE CEMENT.

### EFFECTS OF OVER DOSAGE

A severe over-dosage of RANCONMIX-IWC will result in the following:

- Retardation of initial set.
- Increase in air entrainment.
- Increase in workability

### DOSAGE

Dosage of RANCONMIX-IWC can vary from 0.300 Ltr -0.600 Ltr per 100 kg Cement. However optimum dosage of RANCONMIX-IWC is 200ml per 50 kg bag of cement.

**RANS ENGINEERING & CHEMICALS offers a comprehensive range of products and services for most concrete and finishing needs. Please contact the RANS Technical Service Department or your local RANS agent for further information, samples, demonstrations and instructor services. The information given in this leaflet is based upon laboratory research, as well as extensive field work and application. All products are sold subject to standard conditions of sale which are available on request. This information is based on RANS present state of knowledge and is intended to provide general information on RANS's products and their methods of use. The prospective user is recommended to determine the suitability of RANS's suggestions and products before adopting them on a commercial scale.**

**PRECAUTION:**

Mix/Use only the required quantity of material, which can be utilized within stipulated pot life to avoid solidification.

Wash all the tools and tackles with industrial solvent immediately after the application is completed.

**HEALTH & SAFETY**

Avoid prolonged contact with eyes and skin. For detailed information refer to relevant material safety data sheet.

**PACKGING & STORAGE**

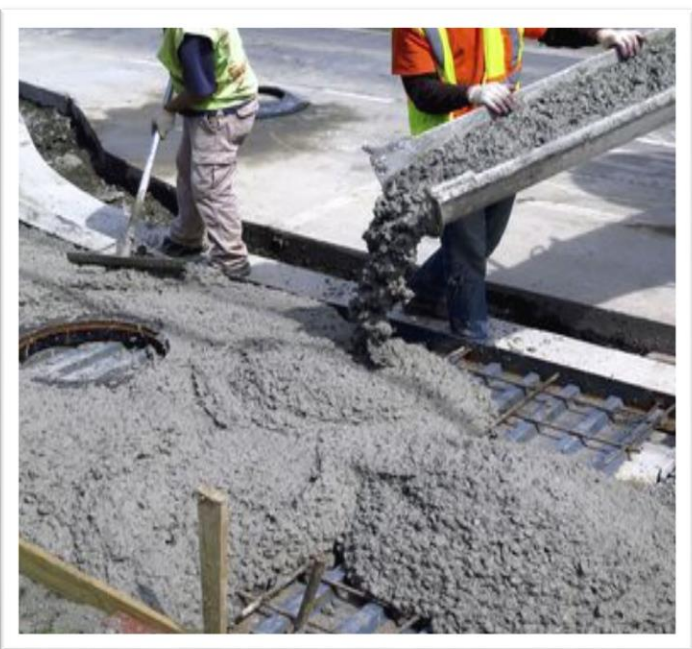
**RANSCONMIX-IWC** is available in 5, 20, 50 and 200 Kgs Pails.

Store containers in a clean dry area protected from direct sunlight and extreme heat and cold. Unopened containers can be stored for 12 months.

**TECHNICAL  
DATA**

<b>Product</b>	Integral Waterproofing Compound
<b>Base</b>	Lignosulphonate
<b>Setting Time</b>	Initial : 175 Minutes Final : 255 Minutes
<b>Compressive Strength, Kg/Sq. cm</b>	3 Days : 255 7 Days : 380
<b>Chloride Contents (As per IS:2645-1975)</b>	0.02 %
<b>Packaging</b>	5 Kgs, 20 Kgs, 50 Kgs & 200 Kgs.
<b>Storage</b>	12 months in original unopened containers.

**PICTURES/IMAGES AT GLANCE**



**RANS ENGINEERING & CHEMICALS PVT. LTD**

[An ISO 9001: 2015 Company]

205, GALI NO-7, A BLOCK, BRIJPURI

YAMUNA VIHAR, NEW DELHI-110094

CONTACT AT: +91-11-22170895, +91-9871393743

Website: [www.ransengineering.com](http://www.ransengineering.com)

Email: [ransengineering@gmail.com](mailto:ransengineering@gmail.com)